

Human Fc epsilon RI alpha/FCER1a Protein

Cat. No. FER-HM101

Description

Source	Recombinant Human Fc epsilon RI alpha/FCER1a Protein is expressed from HEK293 with His tag at the C-Terminus. It contains Val26-Gln205.
Accession	P12319-1
Molecular Weight	The protein has a predicted MW of 22.1 kDa. Due to glycosylation, the protein migrates to 48-65 kDa based on Tris-Bis PAGE result.
Endotoxin	Less than 1EU per ug by the LAL method.
Purity	> 95% as determined by Tris-Bis PAGE > 95% as determined by HPLC

Formulation and Storage

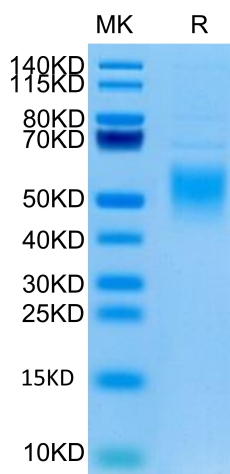
Formulation	Lyophilized from 0.22µm filtered solution in PBS (pH 7.4). Normally 8% trehalose is added as protectant before lyophilization.
Reconstitution	Centrifuge the tube before opening. Reconstituting to a concentration more than 100 µg/ml is recommended. Dissolve the lyophilized protein in distilled water.
Storage	-20 to -80°C for 12 months as supplied from date of receipt. -20 to -80°C for 3-6 months in unopened state after reconstitution. 2-8°C for 2-7 days after reconstitution. Recommend to aliquot the protein into smaller quantities for optimal storage. Please minimize freeze-thaw cycles.

Background

Known susceptibility genes to atopy and asthma have been identified by linkage or associations with clinical phenotypes, including total serum IgE levels. IgE-mediated sensitivity reactions require a high-affinity IgE receptor (FcεRI), which immobilizes the immunoglobulin on the surface of the effector cells, mostly mast cells and basophils. Similarly to the previously investigated beta subunit of the receptor, FCER1A is a good candidate for a quantitative trait locus (QTL) in allergic diseases, and appears to participate in the systemic regulation of IgE levels.

Assay Data

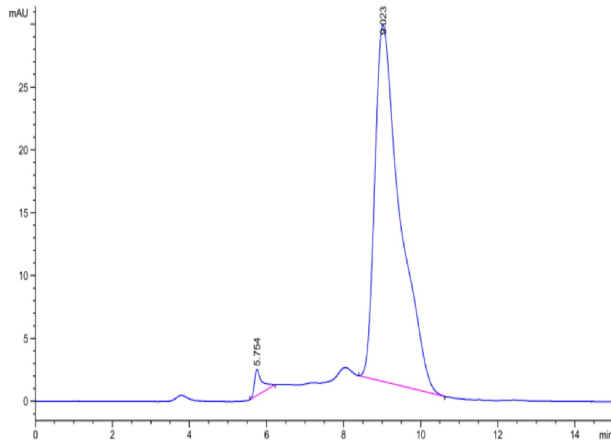
Tris-Bis PAGE



Human Fc epsilon RI alpha on Tris-Bis PAGE under reduced condition. The purity is greater than 95%.

SEC-HPLC

Assay Data



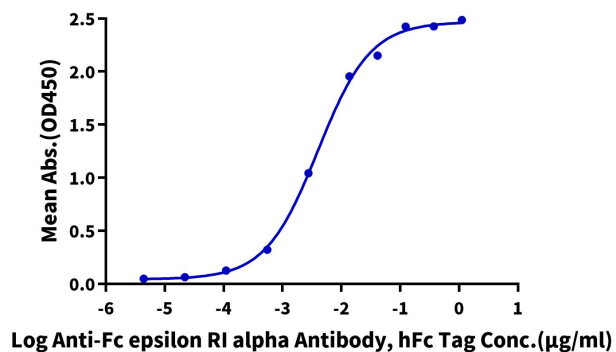
The purity of Human Fc epsilon RI alpha is greater than 95% as determined by SEC-HPLC.

Assay Data

ELISA Data

Human Fc epsilon RI alpha, His Tag ELISA

0.02µg Human Fc epsilon RI alpha, His Tag Per Well



Immobilized Human Fc epsilon RI alpha, His Tag at 0.2µg/ml (100µl/well) on the plate. Dose response curve for Anti-Fc epsilon RI alpha Antibody, hFc Tag with the EC50 of 4.0ng/ml determined by ELISA.